



Interactive touch solutions

# TEHNO SKY

## TEHNO SKY Group

The international manufacturer  
of interactive touch devices of medium and premium class

- information touch kiosks
- interactive panels
- interactive lectern
- self-service kiosks
- touch tables
- children's interactive desks
- software
- VR and AR



TEHNO SKY Group



## INFORMATION TOUCH KIOSKS

# TEHNO SKY

Information kiosks for various business tasks and government organizations



**TEHNO SKY**

# 01

## INFORMATION TOUCH KIOSK TEHNO SKY MINI 1 / MINI 2

Screen: 24"

Form Factor: indoor floor standing kiosk

Touch Sensor: PCAP

Size Mini 1: 1603x630x210(350)

Size Mini 2: 1702x500x350

Weight: 55



TEHNO SKY Group



# 01

## TEHNO SKY

# MINI 1 / MINI 2



**TEHNO SKY**

### Use cases:

- informing
- QMS (queue management system) TEHNO SKY
- registration for the event
- ticket sales
- collecting feedback and suggestions
- service quality assessment
- collecting applications

Major exhibitions actively use the TEHNO SKY MINI 1 with a receipt printer to register visitors to events. Enter the data — get a ticket — present it at the entrance.

TEHNO SKY electronic queue at the TEHNO SKY MINI 1 kiosk



### Technical Specification

#### Display

Screen: 24"  
Resolution: 1920x1080(FullHD)  
Luminance: 300 cd/m2  
Display type: LCD  
Operating mode: 24/7  
Backlight Life: 25 000 hours

#### Case

Form Factor: indoor floor standing kiosk  
Case material: structural steel 2 mm  
Case color: any color according to the RAL catalog  
Branding opportunities

#### Touchscreen

Touch Technology: PCAP  
Touch Glass: 4 mm  
Screen transparency: more than 90%  
Touch Points: 10

#### PC

OS: Windows, Linux, Android  
CPU: Intel Celeron / Core i3/i5/i7/i9 or Ryzen  
Graphics Card: Integrated/ Independent  
System Memory: 4-32 GB DDR4  
Storage Device: SSD 120 GB+

#### General specifications

Size Mini 1: 1603x630x210(350)  
Size Mini 2: 1702x500x350  
Weight: 55 kg  
Power consumption: 220 W  
Operating conditions: Indoors, temperature from +5 to +35, relative humidity up to 80%

**TEHNO SKY**

02

## INFORMATION TOUCH KIOSK TEHNO SKY **SLIM**

Screen: 32-55"

Form Factor: indoor floor standing kiosk

Touch Sensor: IR/PCAP

Size: 1310x814x540

Weight: 65



TEHNO SKY Group





# TEHNO SKY SLIM



**TEHNO SKY**

## Use cases:

- informing
- QMS (queue management system) TEHNO SKY
- registration for the event
- ticket sales
- collecting feedback and suggestions
- service quality assessment
- collecting applications

**TECHNO SKY SLIM** is actively used in many companies as an information kiosk for the lobby, and is also presented in many museums, hospitals, banks and etc to inform. For example, the Belarusian National Museum of the Great Patriotic War.

## Technical Specification

### Display

Screen: 32-55"  
Resolution: FullHD/UHD  
Luminance: 300 cd/m2  
Display type: LCD  
Operating mode: 24/7  
Backlight Life: 25 000 hours

### Case

Form Factor: indoor floor standing kiosk  
Case material: structural steel 2 mm  
Case color: any color according to the RAL catalog  
Branding opportunities

### Touchscreen

Touch Technology: IR/PCAP  
Touch Glass: 4 mm  
Screen transparency: more than 90%  
Touch Points: 20

### PC

OS: Windows, Linux, Android  
CPU: Intel Celeron / Core i3/i5/i7/i9 or Ryzen  
Graphics Card: Integrated/ Independent  
System Memory: 4-32 GB DDR4  
Storage Device: SSD 120 GB+

### General specifications

Size: 1310x814x540  
Weight: 65 kg  
Power consumption: 220 W  
Operating conditions: Indoors, temperature from +5 to +35, relative humidity up to 80%



**TEHNO SKY**

# 03

## INFORMATION TOUCH KIOSK TEHNO SKY **SMALL**

Screen: 24"

Form Factor: indoor floor standing kiosk

Touch Sensor: PCAP

Size: 1490x652x271(480)

Weight: 80



TEHNO SKY Group



# 03 TEHNO SKY SMALL

**TEHNO SKY**



## Use cases:

- informing
- QMS (queue management system) TEHNO SKY
- registration for the event
- ticket sales
- collecting feedback and suggestions
- service quality assessment
- collecting applications

**TEHNO SKY SMALL** is actively bought all over the world. A classic solution for informing and electronic queue TEHNO SKY, industrial solution for factories and special productions. The infokiosk with a stylish body and powerful characteristics is mobile enough to move it from place to place.

## Technical Specification

### Display

Screen: 24"  
Resolution: 1920x1080(FullHD)  
Luminance: 300 cd/m2  
Display type: LCD  
Operating mode: 24/7  
Backlight Life: 25 000 hours

### Case

Form Factor: indoor floor standing kiosk  
Case material: structural steel 2 mm  
Case color: any according to the RAL catalog  
Branding opportunities

### Touchscreen

Touch Technology: PCAP  
Touch Glass: 4 mm  
Screen transparency: more than 90%  
Touch Points: 10

### PC

OS: Windows, Linux, Android  
CPU: Intel Celeron / Core i3/i5/i7/i9 or Ryzen  
Graphics Card: Integrated/ Independent  
System Memory: 4-32 GB DDR4  
Storage Device: SSD 120 GB+

### General specifications

Size: 1490x652x271(480)  
Weight: 80 kg  
Power consumption: 220 W  
Operating conditions: Indoors, temperature from +5 to +35, relative humidity up to 80%





**TEHNO SKY**

# 04

## INFORMATION TOUCH KIOSK TEHNO SKY **DUGA**

Screen: 24-32"

Form Factor: indoor floor standing kiosk

Touch Sensor: PCAP

Size: 1317x832x660(855)

Weight: 85



TEHNO SKY Group



# TEHNO SKY DUGA



**TEHNO SKY**

## Use cases:

- informing
- registration for the event
- collecting feedback and suggestions
- service quality assessment
- collecting applications

**TEHNO SKY DUGA** is used at the entrance to many companies. A powerful technical component allows employees of companies not only to see the information, but also to contact the management. The kiosk can be supplemented with a bright and rich 3D virtual tour.

## Technical Specification

### Display

Screen: 24-32"  
Resolution: 1920x1080(FullHD)  
Luminance: 300 cd/m2  
Display type: LCD  
Operating mode: 24/7  
Backlight Life: 25 000 hours

### Case

Form Factor: indoor floor standing kiosk  
Case material: structural steel 2 mm  
Case color: any according to the RAL catalog  
Branding opportunities

### Touchscreen

Touch Technology: PCAP  
Touch Glass: 4 mm  
Screen transparency: more than 90%  
Touch Points: 10

### PC

OS: Windows, Linux, Android  
CPU: Intel Celeron / Core i3/i5/i7/i9 or Ryzen  
Graphics Card: Integrated/ Independent  
System Memory: 4-32 GB DDR4  
Storage Device: SSD 120 GB+

### General specifications

Size: 1317x832x660(855)  
Weight: 85 kg  
Power consumption: 220 W  
Operating conditions: Indoors, temperature from +5 to +35, relative humidity up to 80%

**TEHNO SKY**

# 05 INFORMATION TOUCH KIOSK TEHNO SKY **BROKEN**

Screen: 24"/32"/43"

Form Factor: indoor floor standing kiosk

Touch Sensor: PCAP

Size: 1270x1343x1102

Weight: 95



TEHNO SKY Group



# 05 TEHNO SKY BROKEN

TEHNO SKY



## Use cases:

- informing
- registration for the event
- ticket sales
- collecting feedback and suggestions
- service quality assessment
- collecting applications

The TEHNO SKY BROKEN information kiosk with two displays is ideal for regulating a large flow of customers and informing in high-speed mode, since it allows several users to work at the same time. The futuristic design is perfect for large rooms.

## Technical Specification

### Display

Screen: 24"/32"/43"  
Resolution: FullHD/UHD  
Luminance: 300 cd/m2  
Display type: LCD  
Operating mode: 24/7  
Backlight Life: 25 000 hours

### Case

Form Factor: indoor floor standing kiosk  
Case material: structural steel 2 mm  
Case color: any according to the RAL catalog  
Branding opportunities

### Touchscreen

Touch Technology: PCAP  
Touch Glass: 4 mm  
Screen transparency: more than 90%  
Touch Points: 10

### PC

OS: Windows, Linux, Android  
CPU: Intel Celeron / Core i3/i5/i7/i9 or Ryzen  
Graphics Card: Integrated/ Independent  
System Memory: 4-32 GB DDR4  
Storage Device: SSD 120 GB+

### General specifications

Size: 1270x1343x1102  
Weight: 95 kg  
Power consumption: 220 W  
Operating conditions: Indoors, temperature from +5 to +35, relative humidity up to 80%





**TEHNO SKY**

# 07

## INFORMATION TOUCH KIOSK TEHNO SKY BRAND

Screen: 32"

Form Factor: indoor floor standing kiosk

Touch Sensor: PCAP

Size: 1911x482x182(408)

Weight: 75



TEHNO SKY Group

# 07 TEHNO SKY BRAND

TEHNO SKY



## Use cases:

- ordering pizza, burgers and other food in restaurants and other places of public catering
- services selection and payment
- informing
- QMS (queue management system) TEHNO SKY
- registration for the event
- ticket sales
- collecting feedback and suggestions

The TEHNO SKY BRAND self-service kiosk was developed for retail and is actively used in large retail chains for ordering food. It is equipped with a pos-terminal and a receipt printer, an excellent option as part of a kiosk for ordering fast food, buying and paying for tickets, booking seats.

## Technical Specification

### Display

Screen: 32"  
Resolution: 1920x1080(FullHD)  
Luminance: 300 cd/m2  
Display type: LCD  
Operating mode: 24/7  
Backlight Life: 25 000 hours

### Case

Form Factor: indoor floor standing kiosk  
Case material: structural steel 2 mm  
Case color: any according to the RAL catalog  
Branding opportunities

### Touchscreen

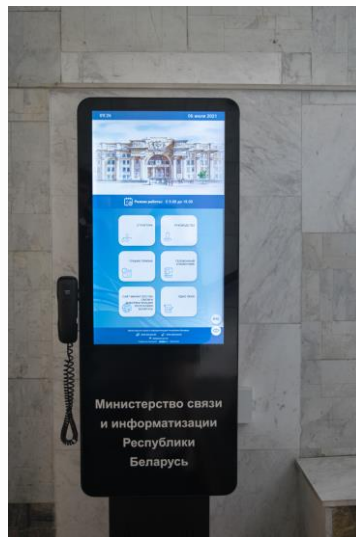
Touch Technology: PCAP  
Touch Glass: 4 mm  
Screen transparency: more than 90%  
Touch Points: 20

### PC

OS: Windows, Linux, Android  
CPU: Intel Celeron / Core i3/i5/i7/i9 or Ryzen  
Graphics Card: Integrated/ Independent  
System Memory: 4-32 GB DDR4  
Storage Device: SSD 120 GB+

### General specifications

Size: 1911x482x182(408)  
Weight: 75 kg  
Power consumption: 220 W  
Operating conditions: Indoors, temperature from +5 to +35, relative humidity up to 80%



**TEHNO SKY**

# 06

## INFORMATION TOUCH KIOSK

### TEHNO SKY

# IR 50

Screen: 50

Form Factor: indoor floor standing kiosk

Touch Sensor: IR

Size: 1964x673x61(500)

Weight: 100



TEHNO SKY Group





# 06

## TEHNO SKY

# IR 50

**TEHNO SKY**



### Use cases:

- informing
- navigation in shopping centers
- registration for the event
- ticket sales
- collecting feedback and suggestions
- service quality assessment
- collecting applications

The TEHNO SKY IR 50 vertical information kiosk is an ideal option if you need a solution with a **wide screen in a vertical design**. A slim, neat case, a wide screen and, if necessary, powerful technical components are installed to support VR solutions.

### Technical Specification

#### Display

Screen: 50"  
Resolution: 1920x1080(FullHD)  
Luminance: 300 cd/m2  
Display type: LCD  
Operating mode: 24/7  
Backlight Life: 25 000 hours

#### Case

Form Factor: indoor floor standing kiosk  
Case material: structural steel 2 mm  
Case color: any according to the RAL catalog  
Branding opportunities

#### Touchscreen

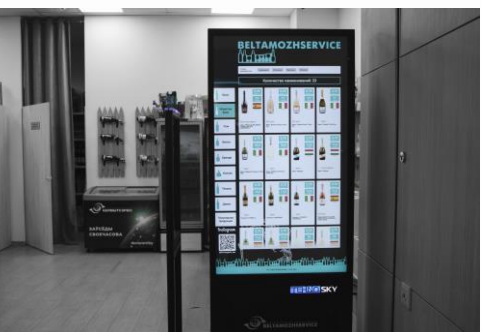
Touch Technology: IR  
Touch Glass: 4 mm  
Screen transparency: more than 90%  
Touch Points: 20

#### PC

OS: Windows, Linux, Android  
CPU: Intel Celeron / Core i3/i5/i7/i9 or Ryzen  
Graphics Card: Integrated/ Independent  
System Memory: 4-32 GB DDR4  
Storage Device: SSD 120 GB+

#### General specifications

Size: 1964x673x61(500)  
Weight: 100 kg  
Power consumption: 220 W  
Operating conditions: Indoors, temperature from +5 to +35, relative humidity up to 80%





# 08 INTERACTIVE LECTERN TEHNO SKY **LECTURE**

Screen: 32"

Form Factor: indoor floor standing kiosk

Touch Sensor: PCAP

Size: 1247x810x770(940)

Weight: 85



TEHNO SKY Group



# 08 TEHNO SKY LECTURE

**TEHNO SKY**



## Use cases:

- modern lectures and seminars
- demonstration of presentations
- conducting spectacular performances

The interactive department of **TEHNOSKY LECTURE** is designed for use in conference halls, lectures, seminars, can be used as part of conference systems with integration with audio and visual systems.

## Optionally:

- space for documents (A4 format)
- 2 additional USB
- HDMI output for those who want to make a presentation from their computer HDMI
- output to the projector
- XLR (in/out) interface for professional microphone

## Technical Specification

### Display

Screen: 24-32"  
Resolution: 1920x1080(FullHD)  
Luminance: 300 cd/m2  
Display type: LCD  
Operating mode: 24/7  
Backlight Life: 25 000 hours

### Case

Form Factor: indoor floor standing kiosk  
Case material: structural steel 2 mm  
Case color: any according to the RAL catalog  
Branding opportunities

### Touchscreen

Touch Technology: PCAP  
Touch Glass: 4 mm  
Screen transparency: more than 90%  
Touch Points: 10

### PC

OS: Windows, Linux, Android  
CPU: Intel Celeron / Core i3/i5/i7/i9 or Ryzen  
Graphics Card: Integrated/ Independent  
System Memory: 4-32 GB DDR4  
Storage Device: SSD 120 GB+

### General specifications

Size: 1247x810x770(940)  
Weight: 85 kg  
Power consumption: 220 W  
Operating conditions: Indoors, temperature from +5 to +35, relative humidity up to 80%



**TEHNO SKY**

# 09 ANTISEPTIC DISPENSER WITH TOUCH SCREEN TEHNO SKY **SANITIZER**

Screen: 24"

Form Factor: indoor floor standing kiosk

Touch Sensor: PCAP



TEHNO SKY Group



TEHNO SKY

# SANITIZER



**TEHNO SKY**

## For antiseptics, for hand disinfection

The design provides a container for an antiseptic, a tank for liquid and gel-like agents. The product is intended for hands, does not irritate the skin and leaves no traces.

## Equipped with a screen (display)

The screen can be touch or conventional, to inform citizens about the protection and prevention of viral diseases, the use of equipment and current news and statistics.

## With a temperature sensor

It is possible to install a sensor for measuring human body temperature, as well as integration into the access system. For example, without temperature measurement and hand disinfection, the pass-through system does not allow a person to pass through.

## The TEHNOSKY SANITIZER can include:

- Bactericidal recirculator
- UV lamp
- Air Ionizer
- PC
- Media Player
- Display
- Touch screen

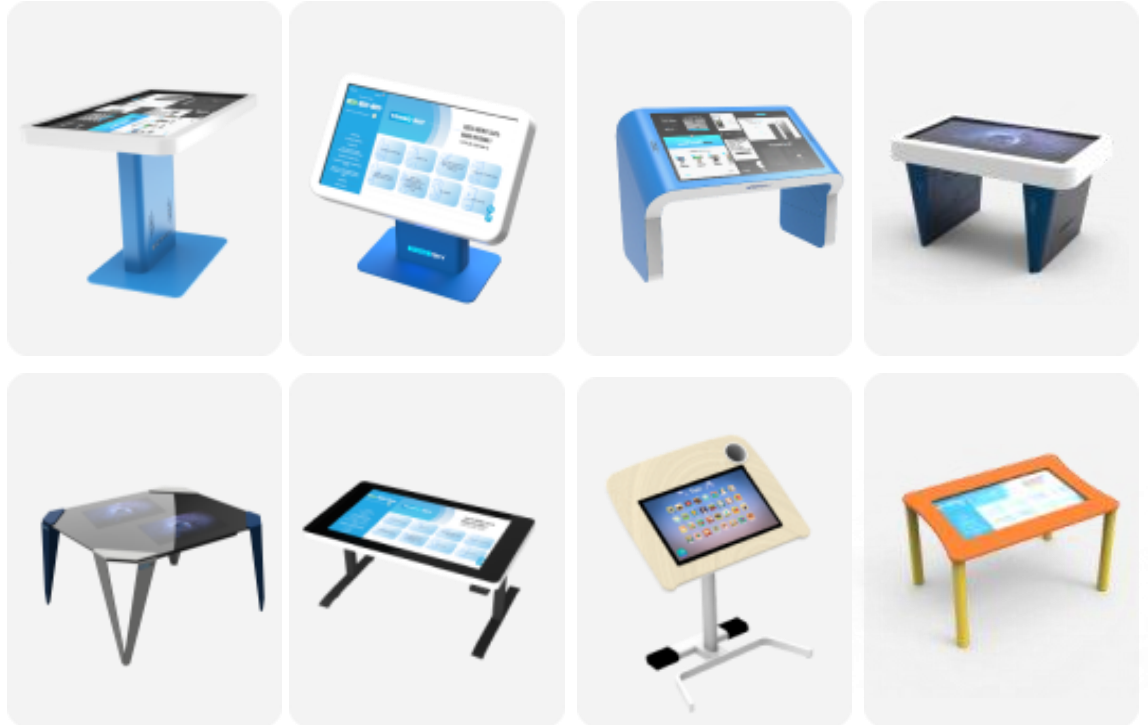






# INTERACTIVE TOUCH TABLE AND DESKS **TEHNO SKY**

Touch tables for education, business and government



**TEHNO SKY**

# 10 INTERACTIVE TOUCH TABLE TEHNO SKY **ANGEL**

Screen: 43"/50"

Form Factor: indoor floor standing kiosk

Touch Sensor: IR

Size 90°: 860x1236x736

0° - 1050x1236x520

Weight: 100



TEHNO SKY Group



# 10 TEHNO SKY ANGLE



**TEHNO SKY**



## Use cases:

- conducting effective presentations
- informing about products and services
- interacting with the company's website
- VR and AR solutions
- conducting spectacular lectures and performances
- the possibility of children's interaction with the screen

The advantage of the TEHNO SKY ANGLE touch table is in the rotary screen. The rotary screen can change from 0 to 90 degrees. The TEHNO SKY ANGLE touch table has 3 devices in one: interactive panel + tribune + table. The construction has special design for children, it doesn't have sharp corners. The screen diagonal can be 43 or 50".

## Technical Specification

### Display

Screen: 43"/50"  
Resolution: Full HD/UHD  
Luminance: 300 cd/m2  
Display type: LCD  
Operating mode: 24/7  
Backlight Life: 25 000 hours

### Case

Form Factor: indoor floor standing kiosk  
Case material: structural steel 2 mm  
Case color: any according to the RAL catalog  
Branding opportunities

### Touchscreen

Touch Technology: IR  
Touch Glass: 4 mm  
Screen transparency: more than 90%  
Touch Points: 20

### PC

OS: Windows, Linux, Android  
CPU: Intel Celeron / Core i3/i5/i7/i9 or Ryzen  
Graphics Card: Integrated/ Independent  
System Memory: 4-32 GB DDR4  
Storage Device: SSD 120 GB+

### General specifications

Size 90°: 860x1236x736  
0° - 1050x1236x520  
Weight: 100  
Power consumption: 220 W  
Operating conditions: Indoors, temperature from +5 to +35, relative humidity up to 80%

**TEHNO SKY**

# 12

## INTERACTIVE TOUCH TABLE FOR KIDS TEHNO SKY **T-KIDS**

Screen: 43"

Form Factor: indoor floor standing kiosk

Touch Sensor: IR

Size: 580x1074x664

Weight: 60



TEHNO SKY Group





# 12

## TEHNO SKY T-KIDS

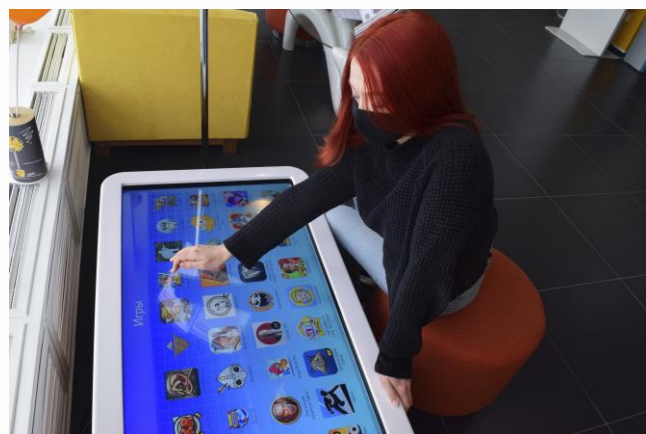
**TEHNO SKY**



### Use cases:

- kindergartens
- waiting area in banks, shopping centers, etc.
- children's areas in café,
- entertainment activities for children
- educational trainings for children
- demonstration of solutions and games for children

The screen of **TEHNO SKY T-KIDS** touch table can be divided into several parts with special software, which allows to work to 8 children at the same time! The construction has special design for children, it doesn't have sharp corners and top of the table is made from safety plastic.



### Technical Specification

#### Display

Screen: 43"  
Resolution: Full HD/UHD  
Luminance: 300 cd/m2  
Display type: LCD  
Operating mode: 24/7  
Backlight Life: 25 000 hours

#### Case

Form Factor: indoor floor standing kiosk  
Case material: structural steel 2 mm  
Case color: any according to the RAL catalog  
Branding opportunities

#### Touchscreen

Touch Technology: IR  
Touch Glass: 4 mm  
Screen transparency: more than 90%  
Touch Points: 20

#### PC

OS: Windows, Linux, Android  
CPU: Intel Celeron / Core i3/i5/i7/i9 or Ryzen  
Graphics Card: Integrated/ Independent  
System Memory: 4-32 GB DDR4  
Storage Device: SSD 120 GB+

#### General specifications

Size: 580x1074x664  
Weight: 60  
Power consumption: 220 W  
Operating conditions: Indoors, temperature from +5 to +35, relative humidity up to 80%

**TEHNO SKY**

# 11 INTERACTIVE TOUCH TABLE TEHNO SKY BIG

Screen: 50-55"

Form Factor: indoor floor standing kiosk

Touch Sensor: PCAP

Size: 1273x1835x910

Weight: 140



TEHNO SKY Group



# 11

## TEHNO SKY

# BIG

**TEHNO SKY**



### Use cases:

- conducting effective presentations
- informing about products and services
- interacting with the company's website
- VR and AR solutions
- conducting spectacular lectures and performances

An effective tool for sales is the **TEHNO SKY BIG** touch table. The wide screen allows you to present information vividly and interestingly, using 3D models and interactive elements. This model is located in the sales department of the developer A100 and demonstrates in 3D the plan of future houses and apartments.

### Technical Specification

#### Display

Screen: 50/55"  
Resolution: Full HD/UHD  
Luminance: 300 cd/m2  
Display type: LCD  
Operating mode: 24/7  
Backlight Life: 25 000 hours

#### Case

Form Factor: indoor floor standing kiosk  
Case material: structural steel 2 mm  
Case color: any according to the RAL catalog  
Branding opportunities

#### Touchscreen

Touch Technology: PCAP  
Touch Glass: 4 mm  
Screen transparency: more than 90%  
Touch Points: 10-30

#### PC

OS: Windows, Linux, Android  
CPU: Intel Celeron / Core i3/i5/i7/i9 or Ryzen  
Graphics Card: Integrated/ Independent  
System Memory: 4-32 GB DDR4  
Storage Device: SSD 120 GB+

#### General specifications

Size: 1273x1835x910  
Weight: 140  
Power consumption: 220 W  
Operating conditions: Indoors, temperature from +5 to +35, relative humidity up to 80%





**TEHNO SKY**

# 13

## INTERACTIVE TOUCH TABLE TEHNO SKY **GLASS 2**

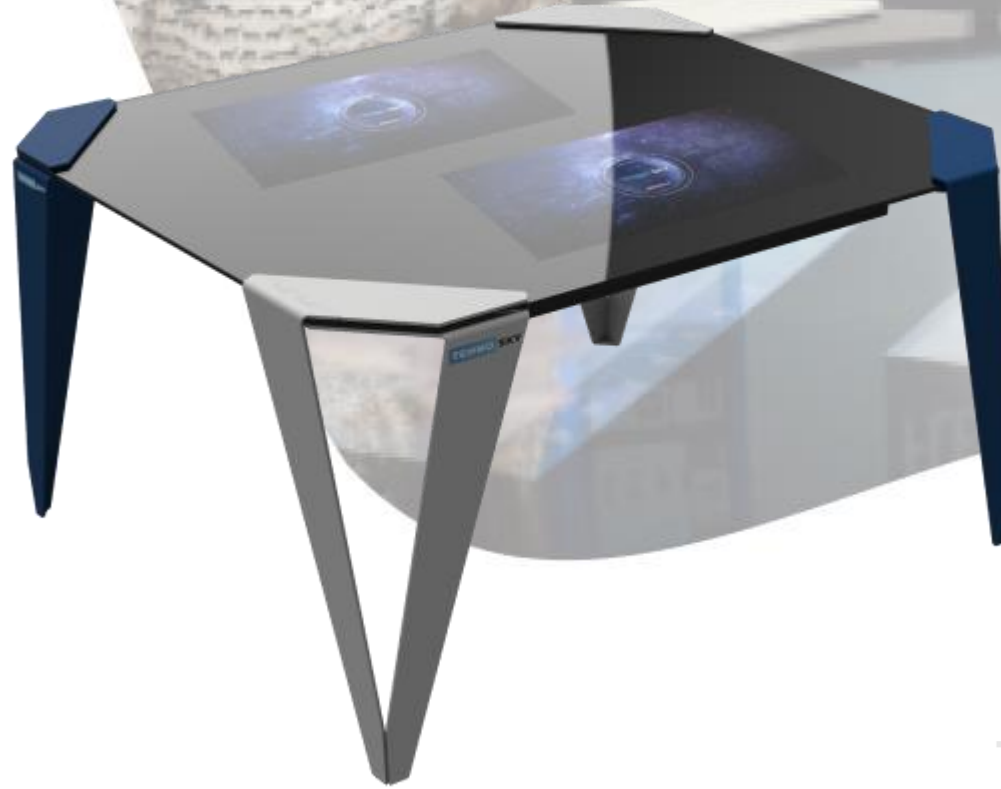
Screen: 24"/32"/43"/50"/55"

Form Factor: indoor floor standing kiosk

Touch Sensor: PCAP

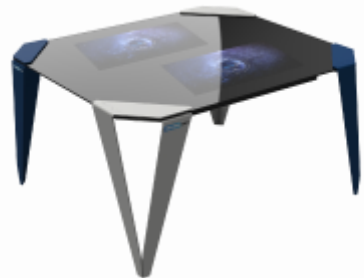
Size: 721x1374x894

Weight: 66



TEHNO SKY Group





# 13

## TEHNO SKY GLASS 2



**TEHNO SKY**

### Use cases:

- ordering pizza, burgers and other food in restaurants and cafes
- payment for services
- demonstration of presentations
- information about goods and services
- interaction with the company's website
- waiting area
- booking and ticket purchase

Glass touch table TEHNO SKY GLASS is designer stylish device, it can have two built-in touch screens and PC. It can be supplemented with special software that allows you to: make an order yourself, without getting up from your seat, surf the Internet, play games and watch videos while waiting for an order. You can eat right on the spot without/with lock the screen. The screen is not scratched and is moisture-resistant, it is enough to wipe after eating



### Technical Specification

#### Display

Screen: 24"/32"/43"/50"/55"  
Resolution: Full HD/UHD  
Luminance: 300-500 cd/m2  
Display type: LCD  
Operating mode: 24/7  
Backlight Life: 25 000 hours

#### Case

Form Factor: indoor floor standing kiosk  
Case material: structural steel 2 mm  
Case color: any according to the RAL catalog  
Branding opportunities

#### Touchscreen

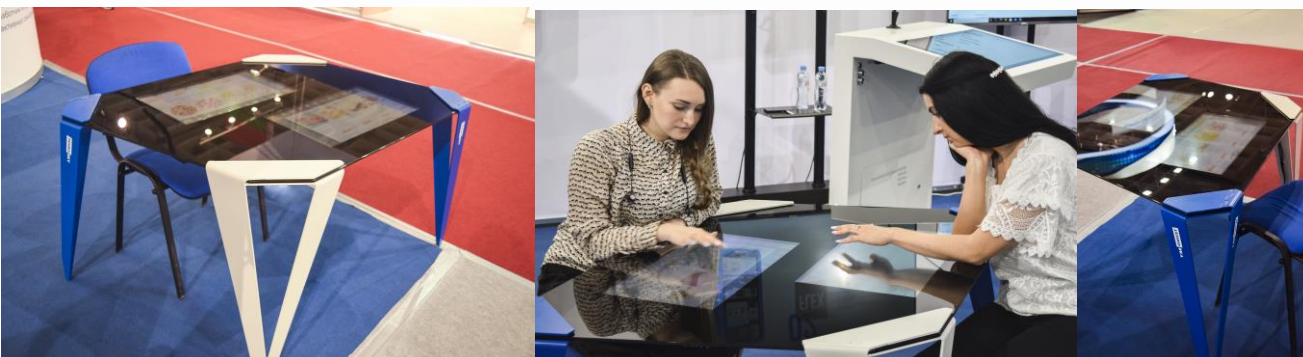
Touch Technology: PCAP  
Touch Glass: 8 mm  
Screen transparency: more than 90%  
Touch Points: 12-30

#### PC

OS: Windows, Linux, Android  
CPU: Intel Celeron / Core i3/i5/i7/i9 or Ryzen  
Graphics Card: Integrated/ Independent  
System Memory: 4-32 GB DDR4  
Storage Device: SSD 120 GB+

#### General specifications

Size: 721x1374x894  
Weight: 66  
Power consumption: 220 W  
Operating conditions: Indoors, temperature from +5 to +35, relative humidity up to 80%



**TEHNO SKY**

14

# INTERACTIVE TOUCH DESK FOR KIDS TEHNO SKY SCHOOL

Screen: 24"

Form Factor: indoor floor standing kiosk

Touch Sensor: PCAP

Size: 90° - 560x800x600

0° - 755x800x450

Weight: 20



TEHNO SKY Group





# 14 TEHNO SKY SCHOOL

**TEHNO SKY**



## Use cases:

- modern digital classrooms in schools
- interactive learning zones in kindergartens and nurseries
- effective personal education at home
- entertainment events for children
- educational trainings for children
- demonstration of solutions and games for children

The TEHNO SKY SCHOOL is children's touch desk for digital learning classes. It is used in kindergartens and schools. The touch desk can be adjusted to the child's height. It is very convenient to place in the children's area or in the waiting area to entertain children while adults are waiting for their turn. Touch desk can have educational and entertainment games and programs.



## Technical Specification

### Display

Screen: 24"  
Resolution: 1920x1080(FullHD)  
Luminance: 300 cd/m2  
Display type: LCD  
Operating mode: 24/7  
Backlight Life: 25 000 hours

### Case

Form Factor: indoor floor standing kiosk  
Case material: MDF, structural steel 2 mm  
Case color: any according to the RAL catalog  
Branding opportunities

### Touchscreen

Touch Technology: PCAP  
Touch Glass: 4 mm  
Screen transparency: more than 90%  
Touch Points: 10

### PC

OS: Windows, Linux, Android  
CPU: Intel Celeron / Core i3/i5/i7  
Graphics Card: Integrated  
System Memory: 4-32 GB DDR4  
Storage Device: SSD 120 GB+

### General specifications

Size: 90° - 560x800x600  
0° - 755x800x450  
Weight: 20  
Power consumption: 220 W  
Operating conditions: Indoors, temperature from +5 to +35, relative humidity up to 80%



## INTERACTIVE TOUCH PANEL TEHNO SKY

Interactive panels are solutions for education  
of  
the future





**TEHNO SKY**

# 16

## WALL-MOUNTED INFORMATION KIOSK TEHNO SKY **FLEX**

Screen: 43"

Form Factor: wall mount

Touch Sensor: IR

Size: 1074x664x134

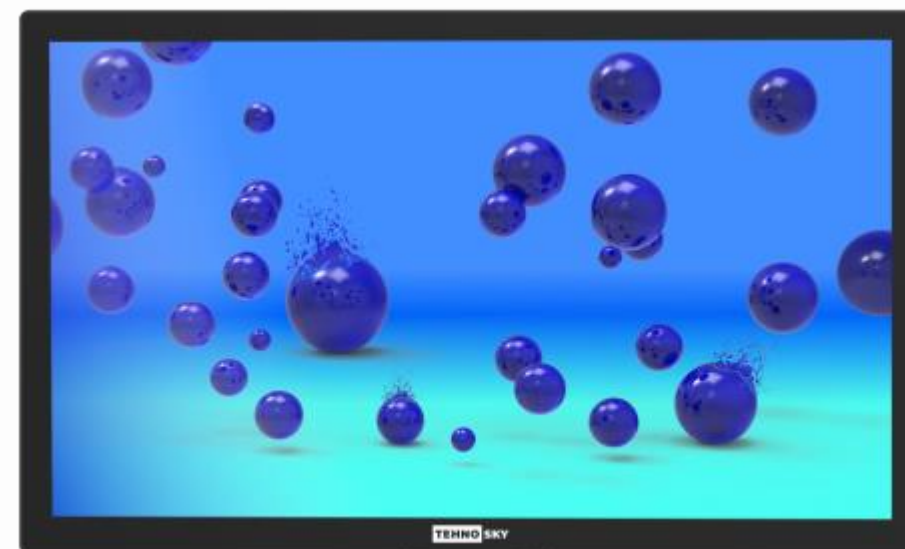
Weight: 26



TEHNO SKY Group



Use cases:



#### Display

Screen: 43"  
Resolution: Full HD/UHD  
Luminance: 300 cd/m2  
Display type: LCD  
Operating mode: 24/7  
Backlight Life: 25 000 hours

#### Case

Form Factor: wall mount  
Case material: Plastic + metal  
Case color: any according to the RAL catalog  
Branding opportunities

#### Touchscreen

Touch Technology: IR  
Touch Glass: 4 mm  
Screen transparency: more than 90%  
Touch Points: 20

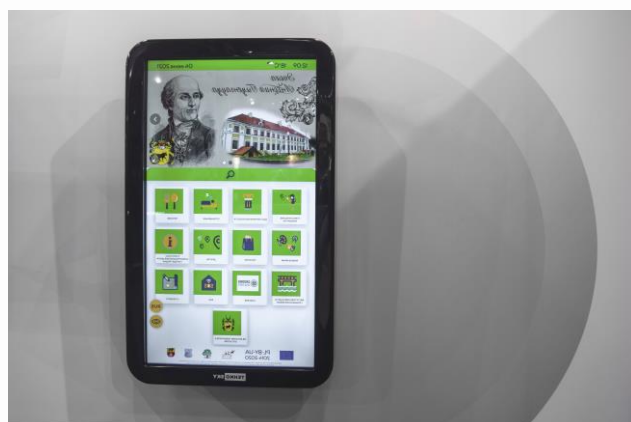
#### PC

OS: Windows, Linux, Android  
CPU: Intel Celeron / Core i3/i5/i7/i9 or Ryzen  
Graphics Card: Integrated/ Independent  
System Memory: 4-32 GB DDR4  
Storage Device: SSD 120 GB+

#### General specifications

Size: 1074x664x134  
Weight: 26  
Power consumption: 220 W  
Operating conditions: Indoors, temperature from +5 to +35, relative humidity up to 80%

# TEHNO SKY FLEX



ature — a  
can have  
fically for  
corners.

**TEHNO SKY**

# 15 INTERACTIVE TOUCH SCREEN TEHNO SKY TOUCH / IR / PRO

Screen: 32"/43"/50"/65"

Form Factor: indoor floor standing kiosk,  
wall mount

Touch Sensor: IR/PCAP

Size: from 450x755x108

Weight: from 25



TEHNO SKY Group





# 15

## INTERACTIVE TOUCH SCREEN TEHNO SKY TOUCH / IR / PRO



**TEHNO SKY**

### Use cases:

- modern lectures and seminars
- demonstration of presentations
- conducting spectacular performances
- informing about products and services
- interaction with the company's website
- VR and AR solutions

The interactive panel **TEHNO SKY PRO** and **TEHNO SKY IR** in our time is almost an indispensable thing for holding exhibitions, fairs and performances. It includes a computer, a tablet, while having a wide screen and strong speakers. The ability to interact with the screen directly significantly affects the effect of the presentation for the client.

### Technical Specification

#### Display

Screen: 32"/43"/50"/65"/75"/86"  
Resolution: Full HD/UHD  
Luminance: 300-700 cd/m2  
Display type: LCD  
Operating mode: 24/7  
Backlight Life: 25 000 hours

#### Case

Form Factor: indoor floor standing  
kiosk, wall mount  
Case material: structural steel 2 mm  
Case color: any according to the  
RAL catalog  
Branding opportunities

#### Touchscreen

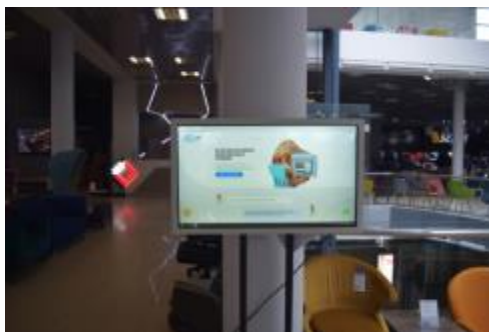
Touch Technology: IR/PCAP  
Touch Glass: 4-6 mm  
Screen transparency: more than  
90%  
Touch Points: 10-30

#### PC

OS: Windows, Linux, Android  
CPU: Intel Celeron / Core i3/i5/i7/i9 or Ryzen  
Graphics Card: Integrated/ Independent to  
RTX3090  
System Memory: 4-32 GB DDR4  
Storage Device: SSD 120 GB+

#### General specifications

Size: from 450x755x108  
Weight: from 25  
Power consumption: 220 W  
Operating conditions: Indoors,  
temperature from +5 to +35, relative  
humidity up to 80%





# TEHNO SKY INTERACTIVE TABLETS TEHNO SKY

The tablet case is made of natural materials, such as wood and plywood. The application of engraving and coloring accent the elegance and stylish design. The tablet case is allowed to fix the device both on a horizontal surface and on a vertical one.



WOOD

**Screen:** 10. **Case form factor:** wall mount, desktop. **Touch Sensor:** PCAP. **Size:** 215x320x171. **Weight:** 0,75.

The tablet is characterized by a strong case, that made from 2 mm structural steel using in crowded places.



METAL

**Screen:** 10. **Case form factor:** wall mount, desktop. **Touch Sensor:** PCAP. **Size:** 340x200x175. **Weight:** 5.

Touch tablets the POWERBANK series are characterized by a feature — the device can work up to 5 days without recharging, which is necessary for events where there are difficulties with connecting the power supply.



POWERBANK 1

**Screen:** 10. **Case form factor:** wall mount, desktop. **Touch Sensor:** PCAP. **Size:** 1048x420x171(290). **Weight:** 12.



POWERBANK 2

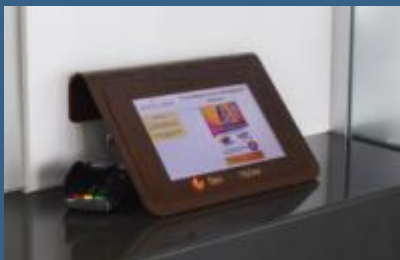
**Screen:** 10. **Case form factor:** wall mount, desktop. **Touch Sensor:** PCAP. **Size:** 1048x420x171(290). **Weight:** 14.

# 17 WOOD



## Use cases:

- informing about the company, products and services
- interaction with the company's website
- evaluation of goods/services
- feedback forms (collection of contacts, applications, potential customers)



# 18 METAL



## Use cases:

- informing about the company, products and services
- interaction with the company's website
- evaluation of goods/services
- feedback forms (collection of contacts, applications, potential customers)



# 19 POWERBANK 1



## Use cases:

- informing about the company, products and services
- interaction with the company's website
- evaluation of goods/services
- feedback forms (collection of contacts, applications, potential customers)

# 20 POWERBANK 2



## Technical Specification

### Display

Screen: 10"  
Resolution: 1920x1080(FullHD)  
Luminance: 300 cd/m2  
Display type: LCD  
Operating mode: 24/7  
Backlight Life: 25 000 hours

### General specifications

Size: 215x320x171  
Weight: 0,75 kg  
Power consumption: 220 W  
Operating conditions: Indoors, temperature from +5 to +35, relative humidity up to 80%

### Case

Form Factor: wall mount, desktop  
Case material: wood  
Branding opportunities

### Touchscreen

Touch Technology: PCAP  
Touch Glass: 4 mm  
Screen transparency: more than 90%

## Technical Specification

### Display

Screen: 10"  
Resolution: 1920x1080(FullHD)  
Luminance: 300 cd/m2  
Display type: LCD  
Operating mode: 24/7  
Backlight Life: 25 000 hours

### Case

Form Factor: wall mount, desktop  
Case material: structural steel 2 mm  
Branding opportunities

### Touchscreen

Touch Technology: PCAP  
Touch Glass: 4 mm  
Screen transparency: more than 90%

### General specifications

Size: 215x320x171  
Weight: 0,75 kg  
Power consumption: 220 W  
Operating conditions: Indoors, temperature from +5 to +35, relative humidity up to 80%

## Technical Specification

### Display

Screen: 10"  
Resolution: 1920x1080(FullHD)  
Luminance: 300 cd/m2  
Display type: LCD  
Operating mode: 24/7  
Backlight Life: 25 000 hours

### Case

Form Factor: wall mount, desktop  
Case material: structural steel 2 mm  
Branding opportunities

### Touchscreen

Touch Technology: PCAP  
Touch Glass: 4 mm  
Screen transparency: more than 90%

### General specifications

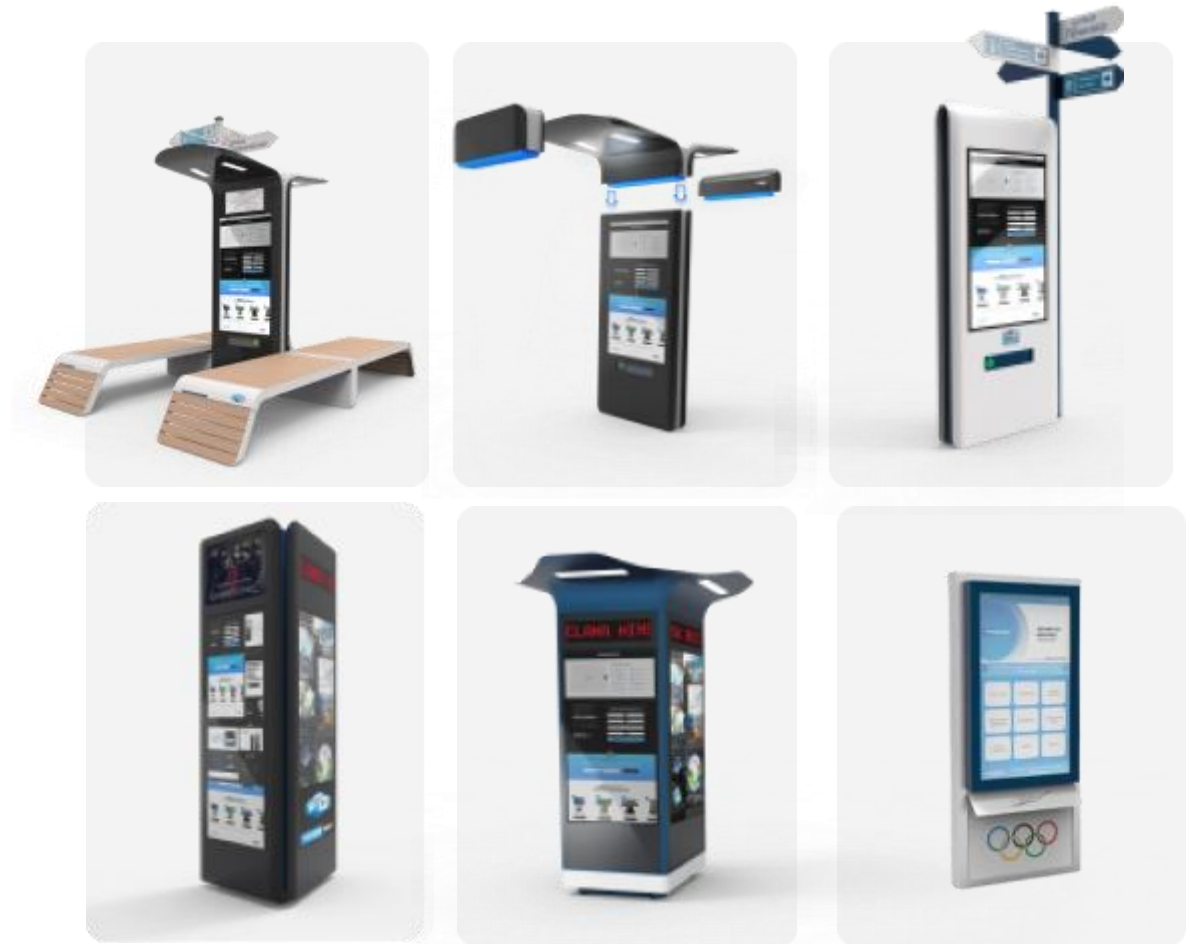
Size: 1048x420x171(290)  
Weight: 12/14 kg  
Power consumption: 220 W  
Operating conditions: Indoors, temperature from +5 to +35, relative humidity up to 80%

**TEHNO SKY**

# TEHNO SKY

## OUTDOOR KIOSKS TEHNO SKY

**TEHNO SKY** kiosks of the **Street** series are designed specifically for the concept «smart city»





## StyleOlimp TEHNO SKY

Information touch kiosk



Operating conditions: **-40 to +40 degrees**

Information outdoor kiosk has professional LCD panel with brightness from 2000 to 5000 cd/m. The device has a light sensor, the brightness of the panel changes depending on the solar activity. The kiosk is equipped climate control for stable work - 40+40 degree.

Professional 30-touch capacitive sensor is allowed to work without weather interference. The case is made specially with the combination of stainless steel with a glass facade. This combination defends from metal corrosion and accent unusual design.



# CONTACT US

If you have any questions,  
please contact us



Use this QR code to **write to us in the chat directly**

The average response time is 34 seconds

**info@tehnosky.ru**  
**+7 (499) 403 35 09**

TEHNO SKY Group

# TEHNO SKY

International manufacturer  
of interactive sensor equipment of medium and  
premium class

TEHNO SKY Group  
Office 34, Bolshaya Sovetskaya str., 16/17,  
Smolensk, Russia

TEHNO SKY Group